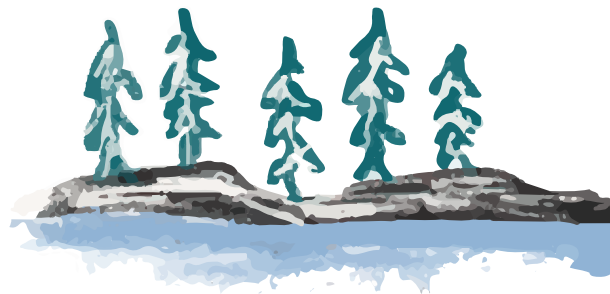


SCHOOL OF ARCTIC AND SUBARCTIC STUDIES

LABRADOR CAMPUS OF MEMORIAL UNIVERSITY

Academic Council - 2023 in Review



Membership:

ASHLEE CUNSOLO (Chair; Vice-Provost, Labrador Campus, & Dean, School of Arctic and Subarctic Studies)

DARIA BOLTOKOVA (Assistant Professor, Anthropology, Cross-Appointed with SASS)

KANANI DAVIS (Chief Executive Officer, Mamu Tshishkutamashutau Innu Education)

AMY HUDSON (Assistant Professor, School of Arctic and Subarctic Studies)

JESSE JACOBS (Director, NAC-Memorial University Partnership)

ARN KEELING (Professor & Head of Dept. of Geography, Cross-Appointed with SASS)

JODIE LANE (Director of Education, Nunatsiavut Government)

SYLVIA MOORE (Associate Professor, School of Arctic and Subarctic Studies)

SCOTT NEILSEN (Associate Professor, School of Arctic and Subarctic Studies & Department of Archaeology)

SARAH PAPPLE (Public Services Librarian, SASS)

ALYSSA PAUL (Chief Administrative Officer, NunatuKavut Community Council)

NATHANIEL POLLOCK (Adjunct Professor, SASS)

LISA RANKIN (Professor of Archaeology, Cross-Appointed with SASS)

ALEX SAWATZKY (Secretary; Knowledge Mobilization Manager, Labrador Campus; Adjunct Professor, SASS)

JAMIE SNOOK (Executive Director, Torngat Secretariat; Adjunct Professor, SASS)

AROUND CAMPUS...



WE SETTLED INTO OUR NEW BUILDING...

...GREW OUR TEAM...



NEW STAFF & ACADEMIC STAFF MEMBERS

- BUILDING AND FACILITIES TECHNICIAN
- PUBLIC SERVICES LIBRARIAN
- SENIOR ASSISTANT REGISTRAR (SHARED WITH NAC)
- SENIOR COMMUNICATIONS ADVISOR (SHARED WITH VP INDIGENOUS AND INTERNATIONALIZATION, AND CENTRAL MARCOMMS)



...AND ARE CONTINUING TO GROW!

POSITIONS IN PROGRESS

- EXECUTIVE ASSISTANT
- IT CONSULTANT
- WELLNESS & SUCCESS NAVIGATOR
- ASSISTANT PROFESSOR

CAMPUS ELDERS, AUNTIES, & UNCLES PROGRAM

- IN DEVELOPMENT
- POTENTIAL APPROACH: HIRE ONE PERSON FOR REGULAR ACTIVITIES, AND BRING IN OTHERS FOR SPECIAL EVENTS



KEY AREA FOR GROWTH: ACADEMIC STAFF MEMBERS, TO SUPPORT PROGRAMMING AND STUDENTS

1,600+ VISITORS



INCLUDING TOURS, U PICKS, & WELLNESS SESSIONS

PYE CENTRE PRODUCTION & PROGRAMMING

4,500+ LBS OF FOOD DONATED

THROUGHOUT NORTH & SOUTH COASTS & CENTRAL LABRADOR



1,500+ LBS OF FOOD SOLD

THROUGH ON-FARM SALES & POP-UP MARKETS



ACADEMIC PROGRAMMING...

GRADUATE PROGRAMS IN ARCTIC & SUBARCTIC FUTURES

LAUNCHED IN MAY 2023

FIRST COHORT

- 11 INDIGENOUS WOMEN, ALL FROM THE NORTH

- ALL WORKING PROFESSIONALS IN EDUCATION-RELATED FIELDS

- INTERESTED IN CULTURAL RECLAMATION, TRANSFORMATION, AND INDIGENOUS SELF-DETERMINATION

- STRONG SENSE OF COLLECTIVE CO-LEARNING

FEEDBACK FROM THE FIRST COHORT WILL INFORM FUTURE ITERATIONS OF THE PROGRAM

- ELDERS JEAN CRANE, ELIZABETH PENASHUE, AND SARAH TOWNLEY ALL ATTENDED, GROUNDING THE PROGRAM IN INDIGENOUS WAYS OF KNOWING AND BEING

- THE PROVOST, VP INDIGENOUS, AVP INDIGENOUS RESEARCH, AND AVP ACADEMIC/DEAN OF THE SCHOOL OF GRADUATE STUDIES ALSO ALL ATTENDED

UNDERGRADUATE PROGRAM IN ARCTIC & SUBARCTIC INTERDISCIPLINARY STUDIES

PROPOSAL SUBMITTED TO SCUGS

- OUR HOPE IS THAT IT WILL GO TO SENATE IN JANUARY

- LARRY BAUER WROTE OUR CALENDAR LANGUAGE

- WE CAN START RECRUITING STUDENTS AFTER SENATE APPROVAL (PENDING FINAL BOARD APPROVAL)

NAC PARTNERSHIP

NORTH-TO-NORTH LEARNING & PROGRAM DEVELOPMENT

- CONTINUING DISCUSSIONS AND PLANNING WITH JESSE JACOBS, BECKY MEARNS, AND OTHERS FROM THE NAC PARTNERSHIP E.G. SOCIAL WORK & EDUCATION

- WANT TO ADAPT PROGRAMMING TO SUIT DIFFERENT NORTHERN CONTEXTS ENSURE WE REFLECT VALUES OF DISTINCT PEOPLES AND PLACES